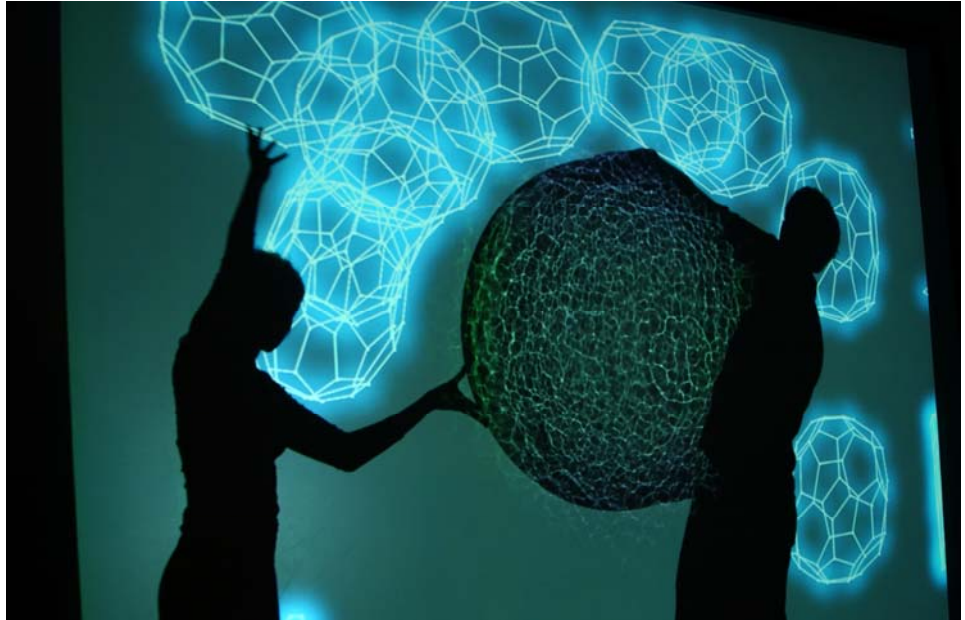




Donald R. and Joan F. Beall
Center for Art + Technology
 University of California, Irvine



EXHIBITION: ***MORPHONANO: Works by Victoria Vesna
 with James Gimzewski***

Organized by David Familian, Beall Center Artistic Director

DATES: February 2 – May 6, 2012

LOCATION: Beall Center for Art + Technology, UC Irvine

EVENTS: **ARTIST RECEPTION:** Saturday, February 4, 6pm-9pm
FAMILY DAY: Saturday, April 21, 11am-4pm
ARTIST LECTURE: Date/Time TBD
BOXED MUSIC EVENT: Thursday, March 15, 6pm-9pm

ADDRESS:
 Beall Center for Art + Technology
 University of California, Irvine
 Claire Trevor School of the Arts
 712 Arts Plaza
 Irvine, CA 92697-2775
www.beallcenter.uci.edu

CONTACT:
 Lesly Martin, Sr. Marketing Director
 Claire Trevor School of the Arts
 (949)824-2189 email: elmartin@uci.edu

Tours and General Info:
 (949) 824-6206
 email: syoung@uci.edu

HOURS:
 Sundays & Wednesdays, 12 – 5pm
 Thursday - Saturday, 12 – 8pm
 Closed Mondays & Tuesdays

Celebrating 10 years





Donald R. and Joan F. Beall
Center for Art + Technology
University of California, Irvine

The Beall Center for Art + Technology at the University of California, Irvine exhibits innovative media artworks that use the latest experimental artistic and scientific digital, audio, and visual technology.

***MORPHONANO* will be on view at the Beall Center from February 2, 2012 – May 6, 2012. Meet the artist at the public opening reception on Saturday, February 4, 6pm – 9pm.**

MORPHONANO marks a decade of an artistic collaboration (2002-2012) of media artist Victoria Vesna and nanoscientist James Gimzewski. Their work is focused on the idea of change and consciousness at the intersection of space-time and embodiment. Participants interact with the works in mindful ways resulting in rich visual and sonic experiences within a meditative space. By reversing the scale of nanotechnology to the realm of human experience, the artist and scientist create a sublime reversal of space-time.

Victoria Vesna is a media artist and Professor at the Department of Design | Media Arts at the UCLA School of the Arts and director of the UCLA Art|Sci center. Currently she is Visiting Professor at Art, Media + Technology, Parsons the New School for Design in New York and a senior researcher at IMÉRA – Institut Méditerranéen de Recherches Avancées in Marseille, France. Her work can be defined as experimental creative research that resides between disciplines and technologies. She explores how communication technologies affect collective behavior and how perceptions of identity shift in relation to scientific innovation. Her most recent experiential installations -- Blue Morph, Water Bowls, Hox Zodiac, all aim to raise consciousness around environmental issues natural and human-animal relations. Other earlier notable works are Bodies INCorporated, Datamining Bodies, n0time and Cellular Trans_Actions.

James Gimzewski FRS is a distinguished Professor in the Dept. of Chemistry and Biochemistry at UCLA. He is director of Pico and Nano core laboratory at the California NanoSystems Institute (CNSI). He is also scientific director of the Art | Sci center and a senior fellow of IMÉRA. He is a satellite co-director and PI of materials nanoarchitectonics at the National Institute of Material Science in Tsukuba, Japan. Until February 2001, he was a group leader at the IBM Zurich Labs, where he was involved in Nanoscale science since 1983. He pioneered research on electrical contact with single atoms and molecules, light emission and molecular imaging using STM. His accomplishments include the first STM-manipulation of molecules at room temperature, the realization of molecular abacus using buckyballs, the discovery of single molecule rotors and the development of nanomechanical sensors based on nanotechnology, which explore the ultimate limits of sensitivity and measurement. He is a fellow of the Royal Society.

Celebrating 10 years





Donald R. and Joan F. Beall
Center for Art + Technology
University of California, Irvine

LIST OF WORKS:

BLUE MORPH is an interactive installation that uses nanoscale images combined with sounds derived from the microscopic undulations of a chrysalis during the period of its metamorphosis into a butterfly recorded using nanotechnology. The work is designed to be responsive to minute, subtle, mindful movements of the participant creating a rich visual and sonic experience of morphing. ***Most is revealed in complete stillness.***

NANOMANDALA is a video projected onto a disk of sand, 8 feet in diameter. Visitors can touch the sand as images are projected in evolving scale from the molecular structure of a single grain of sand - achieved by means of photography, optical and scanning electron microscopy (SEM) - to the recognizable image of the complete mandala, and then back again. The original Chakrasamvara mandala was created by monks of the Ghaden Lhopa Khangsten monastery. ***Patience will allow experiencing the whole.***

ZERO@WAVEFUNCTION plays with the idea of scale and molecular manipulation from a distance with the participant changing the structures of the buckyballs with their shadows, a real time interactive metaphor of the scanning tunneling microscope (STM).
Slow motion makes change happen.

BRAIN STORMING: SOUNDS OF THINKING a premier of a work of self organization in progress focusing on scale invariant and the brain using biometric data. A number of brain storming sessions with cutting neuroscientists, nanotechnologists, philosophers and monks will take place throughout the exhibition.

In many ways the works in this exhibition reverse the scale of nanotechnology to a visible realm and time in nano scale creating a sublime reversal of space-time.

ADDITIONAL INFORMATION, IMAGES, AND RESOURCES

www.beallcenter.uci.edu

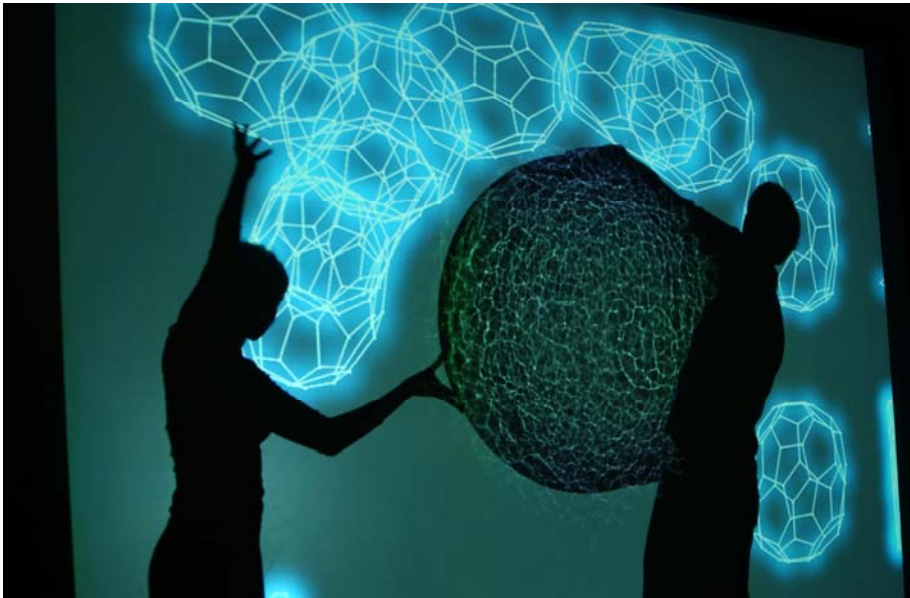
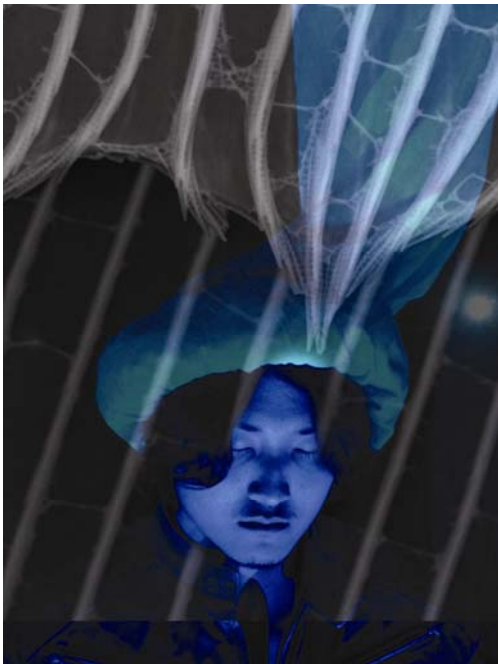
www.victoriavesna.com

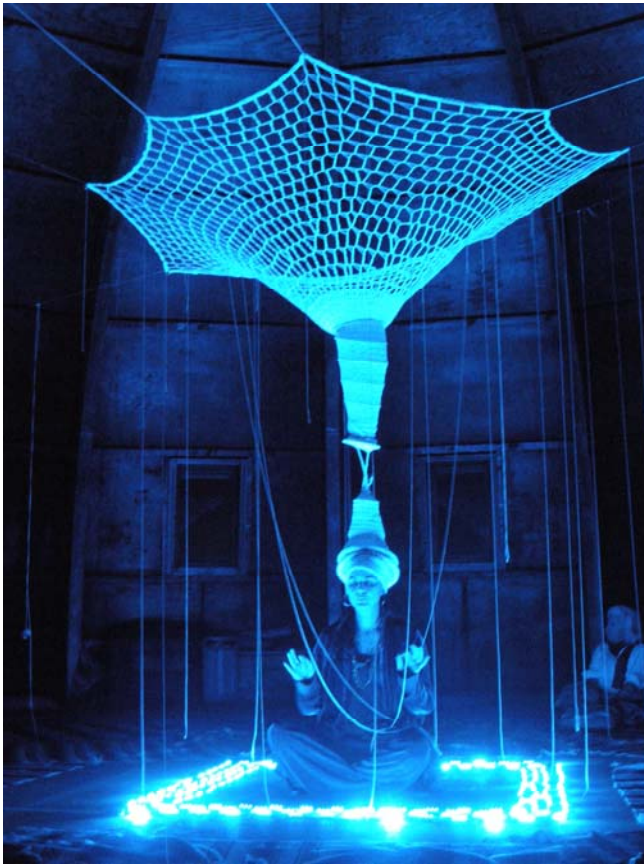
Tours by Beall Interns are available free of charge during business hours.

Private group tours available by appointment: contact the Beall Center at (949)824-6206.

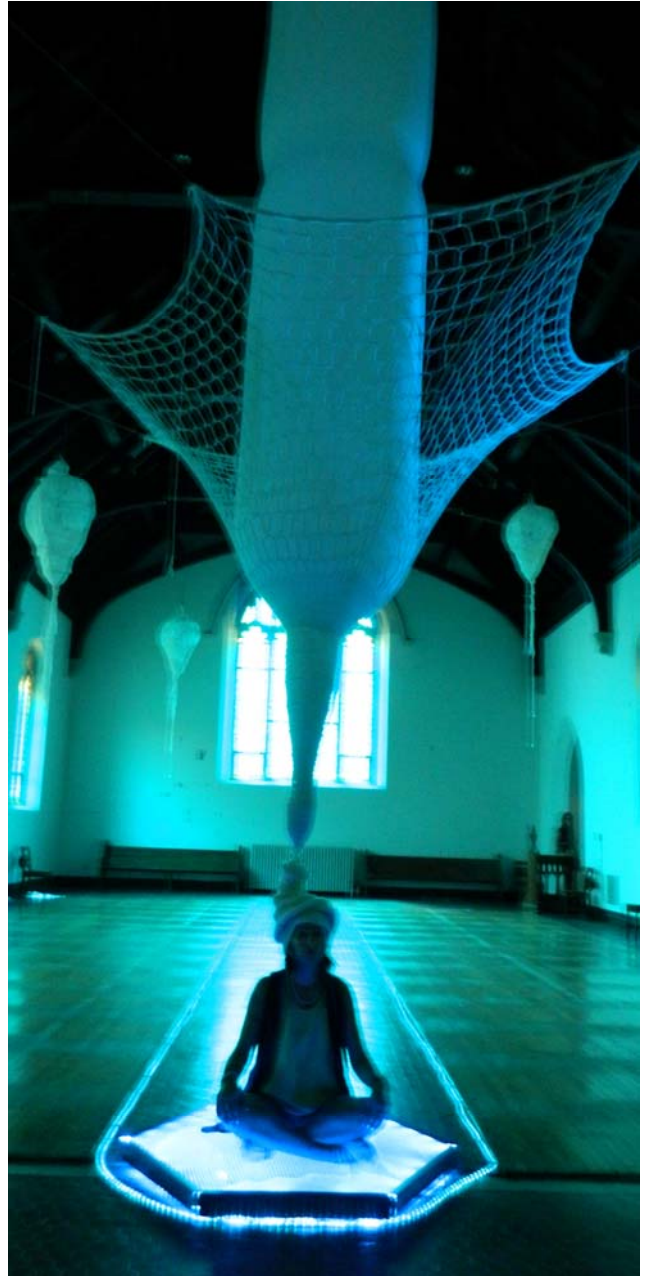
Celebrating 10 years



IMAGES:***ZERO@WAVEFUNCTION, 2002*****BLUE MORPH, 2007 - Present**



BLUE MORPH, 2007 – Present
Integratron, Joshua tree, CA, 2007



BLUE MORPH, 2007 - Present
New York Art Electronic festival,
Governor's Island, 2011



NANOMANDALA, 2004



NANOMANDALA, 2004